

TYPE II STEREO SPEAKER RADIO

ZUMREED

Color variation	2color
Order unit	1pcs
Carton Size	Outer carton : W 675 × H 330 × D 490 /mm
Size	187.3 × H 83.6 × D 71.0 /mm
Package Size	W 240 mm × H 105 mm × D 130 mm
Weight	138g
Material	ABS,etc

TYPE II STEREO SPEAKER RADIO



Type2 Stereo Speaker Radio Instruction Sheet for USABack

Radio Stereo Speaker.
You can also connect an MP3 player or iPod.

sensor triggers honking horn sound and tail lights. Also displays the time.

Color Variation



RED & BEIGE

VWT-68112
4542202-68112-1



GREEN & IVORY

VWT-68113
4542202-68113-8



Packaging

[Instruction Manual]



[USBcode]



[Code Antenna]
(For FM radio)



[Audio cable only for this commodity]
(For speaker)



Package

Size W240×H105×D130/ mm



TYPE II STEREO SPEAKER RADIO

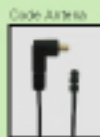
ZUMREED

Color variation	2color
Order unit	1 pcs
Carton Size	Outer carton : W 675×H 330×D 490 /mm
Size	187.3 ×H 83.6 ×D 71.0 /mm
Package Size	W 240 mm×H 105 mm×D 130 mm
Weight	130g
Material	ABS,etc

■ 充実した4つの機能

[Radio]

Press the power button once to turn the radio on. The last set radio frequency will display.
Press the set button to set AM or FM band. The last set radio frequency will display.



[Stereo speaker]

You can use this product as stereo speaker. Plug the enclosed 3.5mm plug audio cable into AUDIO IN and your music player's earphone jack.



[The CDS Motion Sensor]

The CDS motion sensor triggers honking horn sounds and the headlights and taillights to flash. To activate this function, turn on the switch on the bottom side of this product.



[Setting the clock]

Once the batteries are installed or the USB cable is plugged in to a power supply, the display will flash showing the clock.



■ Features positionable ride height.

Living

The AC/DC adaptor ties to the outlet and the power supply is supplied.



Desk

The USB code ties to PC and the power supply is supplied.



Car

The car plug ties to the cigar writer socket of the car and the power supply is supplied.

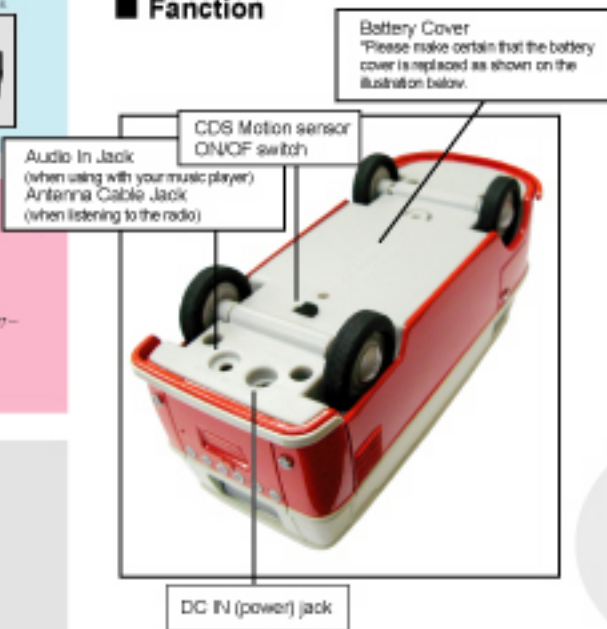


Park and leisure

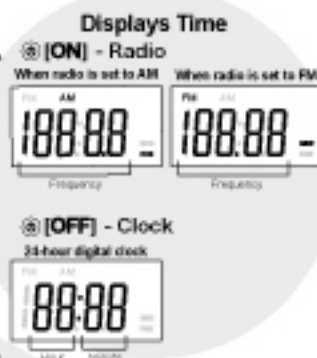
It puts in the back of the main body four alkali AA batteries, and the power supply is supplied.



■ Function



[Setup key/liquid crystal screen display]



-
- ① Select and AM/FM switch button
 - ② Adjust Radio Tuning Down / Adjust Clock Down
 - ③ Adjust Radio Tuning Up / Adjust Clock Up
 - ④ Sound Volume Down
 - ⑤ Sound Volume Up
 - ⑧ Power